

stone set

P.S. in Hub in front of Clark & shows
of N.E. East Intersection ^{at} track
Subway Hub (D.A.P.) 175⁰ West

Washington

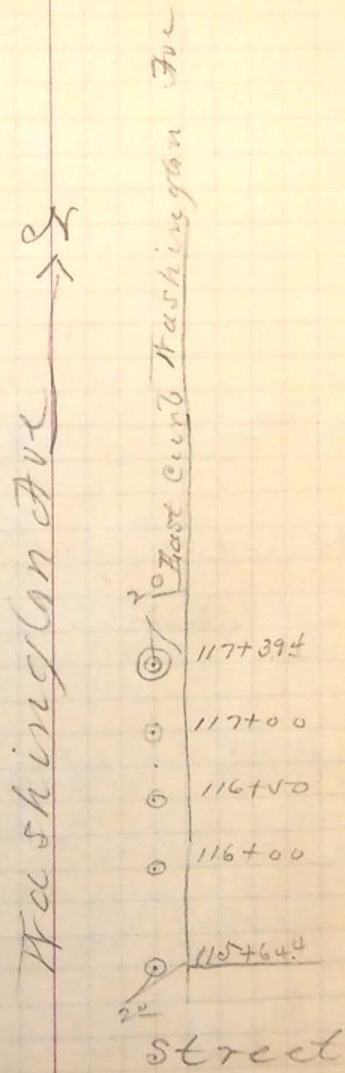
Hub's diam 20 west of curb line

North to sta 117+39.4

West curb ^{at} sta 115+64.4

East Curb Washington Ave from

Saturday P.M. May 10th 1890



24th